

LDAP configuration guide

erwin DATA INTELLIGENCE (DI) SUITE

Version 10.0 & above

Configuration Guide

Copyright Notice

This manual is © erwin, Inc. All rights reserved. No part of this manual may be reproduced, distributed or transmitted, in whole or in part, in paper, electronic or any other form or by any means other than as expressly permitted in the applicable DI Suite Software License Agreement or Software License and Maintenance Agreement, or as otherwise expressly permitted by erwin, Inc.

Trademark Notice

erwin DI Suite, MAPPING MANAGER and erwin DATA GOVERNANCE are a trademark of erwin, Inc. and may not be used without the express written permission of erwin, Inc. This list of trademarks may not be complete; other trademarks or registered trademarks may be owned by erwin, Inc. from time to time and may be used in this manual. All other trademarks or service marks are the properties of their respective owners.

Proprietary and Confidential Information Notice

erwin, Inc. software products contain valuable trade secrets and proprietary information and are protected internationally, including without limitation, by Canadian, United States and international copyright, trademark, and other intellectual property laws and treaties.

Unauthorized use of this manual or erwin, Inc. software products is strictly prohibited and may result in civil damages and criminal prosecution. See the applicable erwin, Inc. Software License Agreement or Software License and Maintenance Agreement for additional information.

Disclaimers

erwin, Inc. reserves the right to revise this manual and make periodic changes to its content without obligation on erwin, Inc. Corporation's part to notify any person of such revisions or changes. erwin, Inc. does not assume responsibility for the use of this manual. erwin, Inc. makes no representation or warranty as to the accuracy of the contents of this manual. All statements made and information provided in this manual is provided on an errors and omission accepted (E. & O.E.) basis only.

Publication information

Release	: erwin Data Intelligence (DI) Suite v10.2
Topic	: LDAP configuration guide
Publication Date	: Dec 2020

Contents

1	About this Guide.....	4
2	Introduction	4
3	Pre-Requisites.....	4
4	Supported LDAP authentication providers	4
5	Configuration steps	4
5.1	Step 1: Create Organizational Unit & roles on LDAP	4
5.2	Step 2: Configure LDAP Properties in database.properties	5
5.2.1	Update WebAuthenticationMechanism.....	5
5.2.2	Parameters that need to be updated	5
5.2.3	Example	7
5.3	Restart erwin DI Suite application from the tomcat console	7
6	Frequently asked questions.....	7

1 About this Guide

This document is a configuration guide explaining how to configure LDAP authentication and authorization for erwin Data Intelligence Suite.

2 Introduction

LDAP authentication and authorization enables customers to use their existing LDAP directory structure for erwin DI suite user management.

3 Pre-Requisites

erwin Data intelligence (DI) Suite v10.0 or above need to be deployed

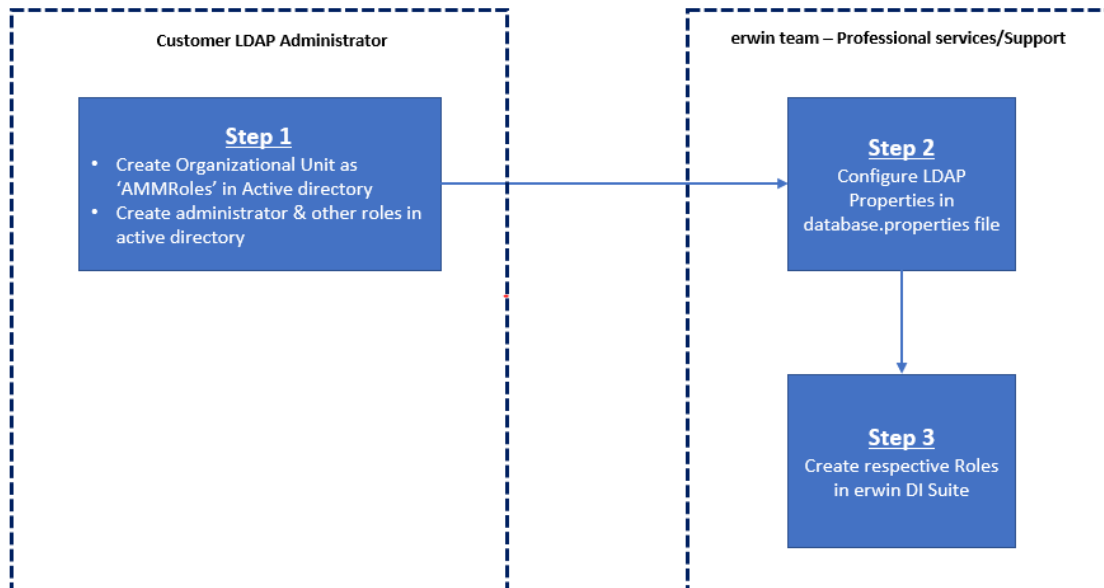
This configuration guide is developed considering that LDAP is already configured within customer's organization, and erwin Data intelligence suite is being added to it.

Further, our assumption is that customer have an internal LDAP administrator. erwin would need his/her assistance during this configuration for creating relevant groups in the LDAP

4 Supported LDAP authentication providers

erwin Data Intelligence Suite supports Active LDAP. However, erwin Data Intelligence Suite also supports all standard LDAP authentication providers with minimal configuration changes

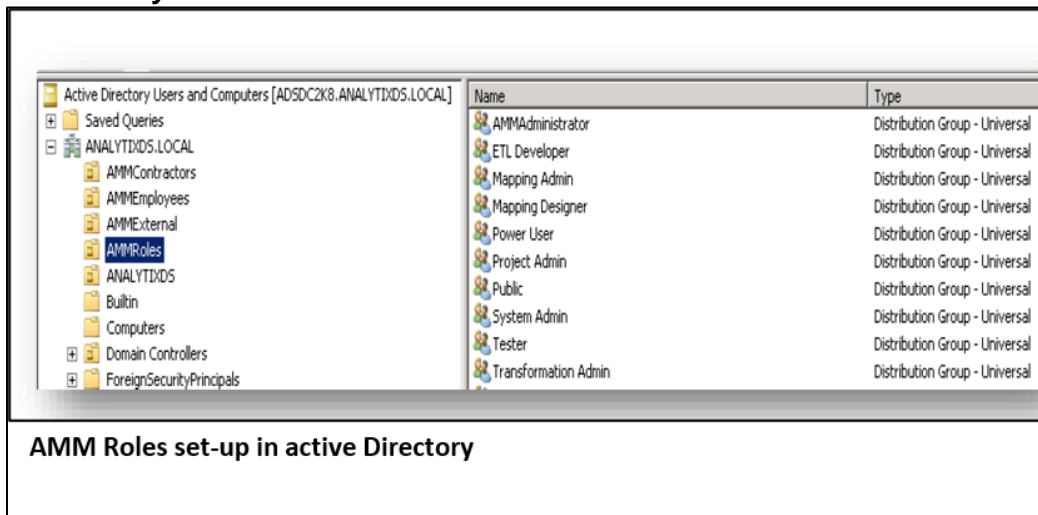
5 Configuration steps



5.1 Step 1: Create Organizational Unit & roles on LDAP

- Create a new Organizational Unit (OU) in the active directory
 - o For example - “**AMMRoles**”
 - Note: the name of OU can be of customers choice
 - o Create the roles under the organizational unit, like ETL Developer, Power User, Tester etc,
- Create an Administrator role - A separate role must be created in Active Directory under newly created Organizational Unit, and the role name can be anything except “Administrator”
 - o (eg: create a role named “**AMMAdministrator**” as shown below).
- Both the organizational unit and the roles created in the LDAP need to be further given in database.properties file of erwin DI Suite

Sample LDAP Directory:



5.2 Step 2: Configure LDAP Properties in database.properties

- Navigate to database.properties (C:\Program Files\Apache Software Foundation\Tomcat 8.5\webapps\erwinDIsuite\WEB-INF\database\database.properties)

5.2.1 Update WebAuthenticationMechanism

Update WebAuthenticationMechanism from “DB” to “DB, LDAP”

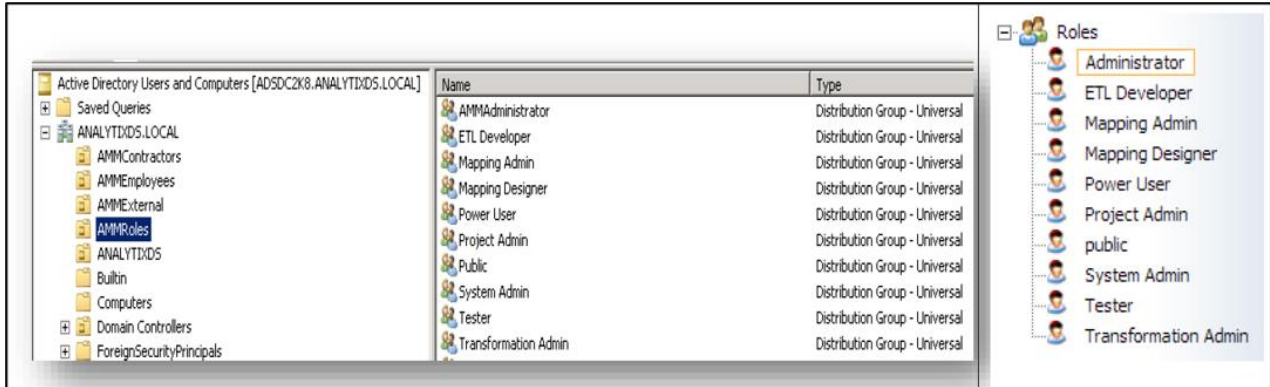
```
### Authentication Configuration Begin
WebAuthenticationMechanism=DB, LDAP
WebServiceAuthenticationMechanism=DB
### Authentication Configuration End
```

5.2.2 Parameters that need to be updated

LDAP CONFIGURATION PARAMETERS

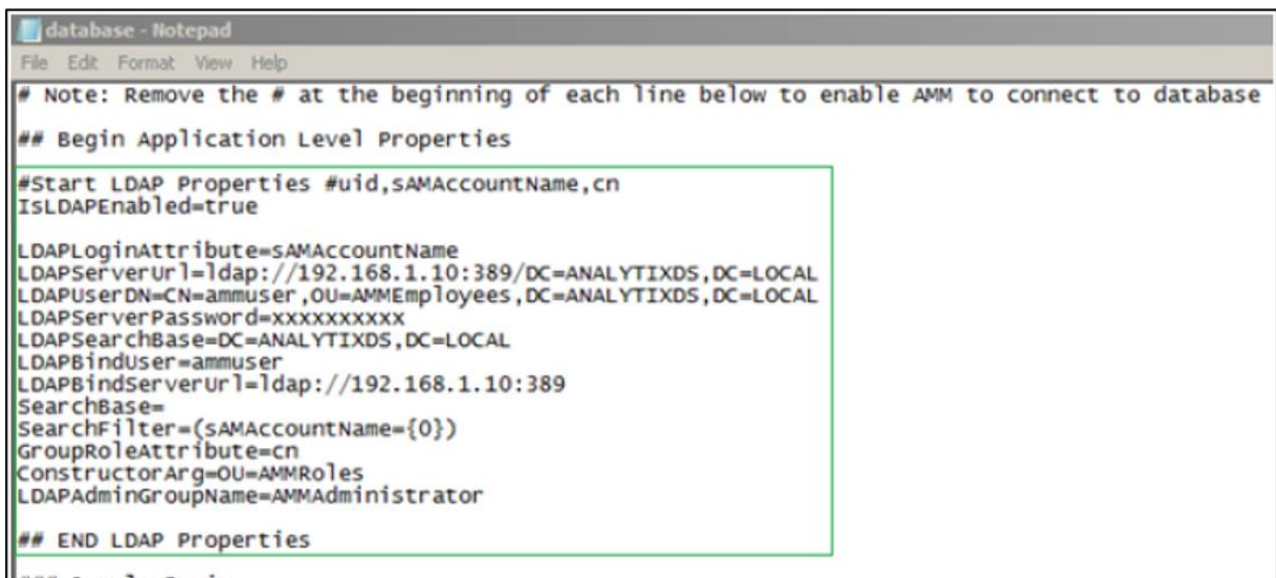
LDAPLoginAttribute	<p>Enter the login attribute name used for the bind to the LDAP database. This can be any of the < #uid (or) sAMAccountName (or) cn> as setup.</p> <p>e.g., LDAPLoginAttribute=sAMAccountName</p>
LDAPServerUrl	<p>Enter the fully qualified name (URL) of the LDAP Server IP address along with the port and domain controller details.</p> <p>e.g., LDAPServerUrl=ldap://192.168.1.10:389/DC=ANALYTIXDS,DC=LOCAL</p>
LDAPUserDN	<p>Enter the LDAP bind user with fully qualified distinguished name. You can add any user DN with the privilege to search LDAP/Active Directory.</p> <p>e.g., in the below case ammuser is the bind user LDAPUserDN=CN=ammuser,OU=AMMEmployees,DC=ANALYTIXDS,DC=LOCAL</p>
LDAPServerPassword	<p>Enter the password associated with the LDAP Server</p>
LDAPSearchBase	<p>The standard format is dc=first part of distinguished server name, dc=any part of the distinguished server name that appears after the dot.</p> <p>You set a search base to put limits on the authentication server directories. Enter the fully qualified search base details</p> <p>e.g., LDAPSearchBase=DC=ANALYTIXDS,DC=LOCAL</p>
LDAPBindUser	<p>Enter only the Bind Username</p> <p>e.g., LDAPBindUser =ammuser</p>
LDAPBindServerUrl	<p>Enter the LDAP Server URL</p> <p>e.g., LDAPBindServerUrl=ldap://192.168.1.10:389</p>
SearchBase	<p><Optional> Can be empty ---Enter an OU to put limits on the authentication server directories.</p> <p>e.g., SearchBase=OU= AMMEmployees</p>
SearchFilter	<p>Enter the same Login Attribute type used to get user details</p> <p>e.g., SearchFilter=(sAMAccountName={0})</p>
GroupRoleAttribute	<p>This attribute holds user group information on the LDAP server. Here it is the identifier to search the association between the user and the AMM role.</p> <p>e.g., GroupRoleAttribute=cn</p>
ConstructorArg	<p>Specify the path where the AMM roles are created</p> <p>e.g., ConstructorArg=OU=AMMRoles</p>
LDAPAdminGroupName	<p>Specify the AMM Admin role name</p> <p>e.g., LDAPAdminGroupName=AMMAdministrator</p>

5.2.3 Example



AMM Roles set-up in active Directory

Resource Manager Roles in DI Suite



Database.properties

5.3 Restart erwin DI Suite application from the tomcat console

Test connectivity once all the steps are done

6 Frequently asked questions

1. Can customer automatically see all the groups and respective users from LDAP in erwin DI Suite?

Yes, the customers will be able to see all the groups and respective users as configured in the database.properties file

2. Can you give any name to the newly created Organizational unit?

Yes, any valid string can be given to name the organizational unit. However ensure that the same name is configured in the database.properties file of erwin Data Intelligence Suite

3. If the user/role is deleted from LDAP, will that automatically reflect in erwin DI suite?

Yes

4. Is erwin DI suite compatible with all LDAP providers?

Most of erwin customers using Active LDAP for their LDAP configuration. Erwin DI Suite is currently certified on Active LDAP.

However, erwin supports all other standard LDAP providers. They might need minor changes to the configuration, and it will be done under guidance of erwin support and development experts

5. What are the basic steps of troubleshooting?

- Ensure that the properties are properly configured in database.properties
- Check for typos for the OU/groups/roles names in database.properties when compared to LDAP
- Look for errors in the log files. If you see any error, send the log files to dgsupport@erwin.com with the proper description of the issue

If any issues with SSO exists, please reach out to dgsupport@erwin.com for any assistance